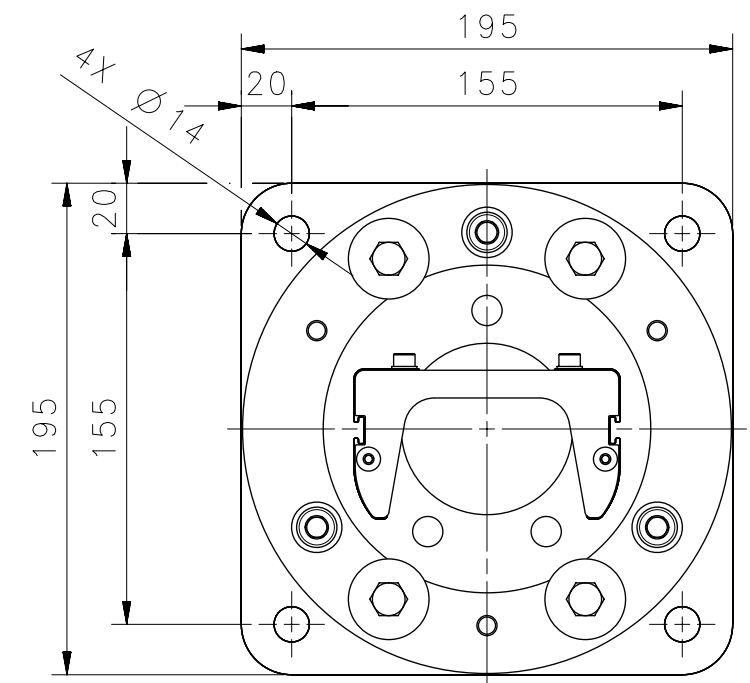
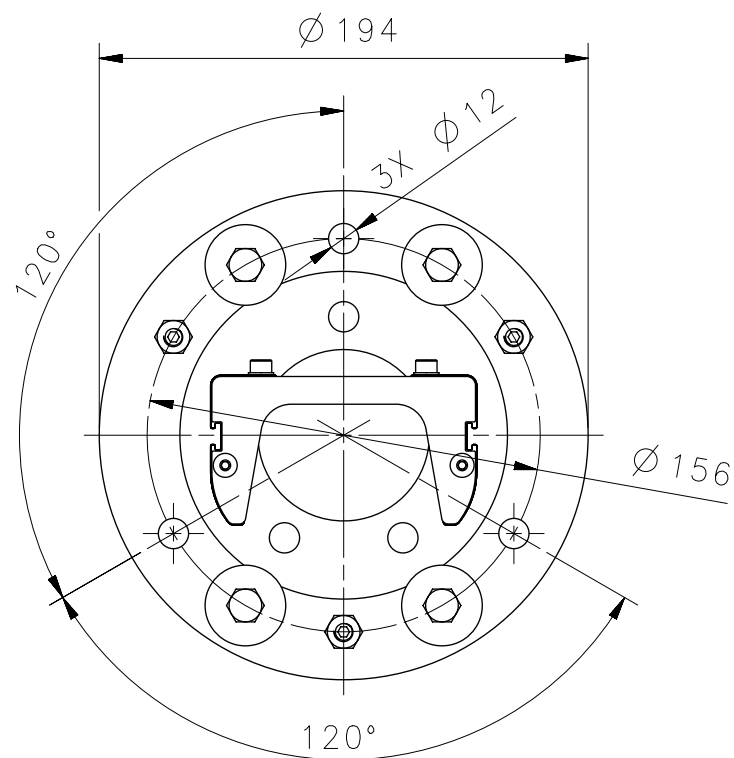




Technical drawing showing a cross-section of a mechanical assembly. The assembly consists of a base plate supported by three springs. A central vertical component is mounted on the base plate, featuring a rectangular plate with four circular holes. Dimensions are indicated: a total height of 48, a base thickness of 6, and a top section height of 4.



AS007362	00										
DES No	DES Rev	Change No	DATE	DESCRIPTION				MODIFIED BY		APPROVED BY	
DATALOGIC AND THE DATALOGIC LOGO ARE REGISTERED TRADEMARKS OF DATALOGIC S.P.A. IN MANY COUNTRIES, INCLUDING THE U.S.A. AND THE E.U.. ALL THE TECHNICAL INFORMATION SHOWN ON THE DRAWING ARE INTELLECTUAL PROPERTY OF DATALOGIC S.P.A., ANY UNAUTHORIZED DISCLOSURE IS FORBIDDEN. DATALOGIC PROPRIETARY & CONFIDENTIAL INFORMATION				MATERIAL: n/a				SCALE 1:3	UNIT mm		
				TREATMENT: n/a							
				CREATOR: V.TERRACCIANO		CREATION DATE: 16/09/2025	APPROVER: L.ROSSETTI	MOLD N. n/a			
				Floor Supports Fixing System				PART CODE		DWG N.	PART REV.
								n/a		DIM-1114	A
								PROJECT		PAGE 1 OF 1	
								SH4 Accessories		SHEET SIZE A3	